

RESULTS-BASED ACCOUNTABILITY™

HOW TO PRODUCE MEASURABLE IMPROVEMENT FOR
CUSTOMERS AND COMMUNITIES



LIVE WEBINARS

Check-In 8:30 a.m. - 9:00 a.m.
Program Part One: 9:00 a.m. - 11:30 a.m.
Part Two: 12:30 p.m. - 5:00 p.m.

March 13, 2024
Eastern AHEC

April 4, 2024
Wake AHEC

April 25, 2024
Area L AHEC

May 14, 2024
Southern Regional AHEC

June 6, 2024
South Piedmont AHEC

NC AHEC

RECRUIT
TRAIN
RETAIN



NC DEPARTMENT OF
**HEALTH AND
HUMAN SERVICES**
Division of Public Health

Provided by North Carolina Area Health Education Centers (NC AHECs)
In collaboration with the NC DHHS/Division of Public Health (DPH)

Results-Based Accountability™

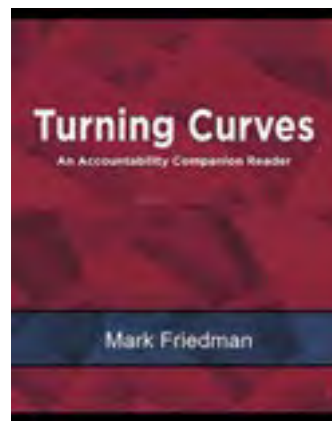
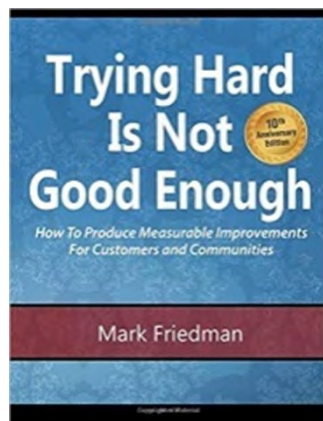
“Results-Based Accountability™ (RBA) is a disciplined way of thinking and taking action to improve entrenched and complex social problems. Communities use RBA to improve the lives of children, families, and the community as a whole. RBA is also used by agencies to improve the performance of their programs.” *Mark Friedman*

The recently revised NC AHEC RBA course has two parts. Both parts are being offered in Spring 2024 in an interactive, one-day live virtual session.

Part One focuses on the building blocks of RBA, essential RBA concepts, including population and performance accountability, and turn the curve decision-making.

Part Two focuses on reviewing basic RBA concepts, applying RBA in your work, and utilizing a web-based tool to share data and stories.

This course includes the books ***Trying Hard is Not Good Enough*** and ***Turning Curves*** by Mark Friedman. **Participants must register at least two weeks prior to the course to ensure delivery.**



Objectives

At the completion of this course, participants will be able to:

Part One

- Describe the core concepts of RBA
- Recognize key characteristics of RBA
- Provide an example of how population accountability applies to whole populations (communities, cities, counties, states, nations)
- Provide an example of how performance accountability applies to customer populations (programs, organizations, agencies, service systems)

Part Two

- Distinguish between population accountability and program performance accountability
- Recognize what it looks like when a community is applying the RBA framework
- Apply Turn the Curve decision-making process to community health work via simulation.

Who Should Attend

People who lead and support initiatives to improve the lives of people in North Carolina, including community-based organizations, healthcare systems, health departments, community activists, and others.

Credit CHES®/MCHES®

Application for CHES® (entry-level) / MCHES® (advanced level) Category I continuing education contact hours (CECH) has been made to the National Commission for Health Education Credentialing, Inc. (NCHEC).

Other Professionals

6.25 Contact Hours will be awarded for participants who attend 90% of the workshop.

CEUs

0.6 CEUs will be awarded for participants who attend 100% of the program.

*Note: Eastern AHEC does not provide CEUs for activities.

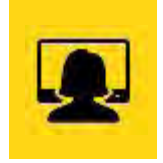
Certificates will be awarded after the participant completes the evaluation.

Results-Based Accountability™

Registration

Registration Fee: \$100

Registration is online only and requires a current MyAHEC account. Registration will close one week prior to the event. ***Due to the participatory nature of this workshop, a computer with audio and video capabilities is required.***



Space is limited. Early registration is advised. Links and instructions for joining the webinar will be provided to registered participants by the host AHEC shortly before the event.

The registration fee includes the books ***Trying Hard is Not Good Enough*** and ***Turning Curves*** by Mark Friedman. **Participants must register at least two weeks prior to the course to ensure delivery.**

NC AHEC Photo Statement

Attendance at this activity grants permission for the North Carolina AHECs to use any photographs, audio, video, or other images from this activity for promotional or educational purposes. Please notify an AHEC staff member if you have concerns.

By registering for this activity, your name and email address may be shared with the above mentioned-joint provider of this continuing education activity.

All Rights Reserved Statement

You may not record, reproduce, publish, distribute, modify, create derivative works, or transmit any program content and/or material presented during continuing professional development (CPD) activities. Continuing professional credit will not be given for unauthorized copied and transmitted recordings of any CPD programs and other activities. Prior registration and attendance are required to receive continuing professional credit.



Click the workshop you would like to attend to register.

March 13, 2024
Eastern AHEC

April 4, 2024
Wake AHEC

April 25, 2024
Area L AHEC

May 14, 2024
Southern Regional AHEC

June 6, 2024
South Piedmont AHEC

NC AHEC Cancellation Policy

- Cancellations must be in writing (fax, email or mail) to host AHEC.
- Registrants canceling between two weeks and two full business days prior to the first day of the event are refunded at 70% of the registration fee subject to a minimum \$25 cancellation fee.
- No refunds or credits will be given for cancellations received less than two full business days prior to the event.
- Cancellations greater than two weeks prior to the event will receive 100% refund.
- No vouchers will be issued in lieu of a refund.
- Transfers/substitute(s) welcome (notify in advance of the program).

Handouts and Evaluations

Supplemental handouts to the ***Trying Hard is Not Good Enough*** and ***Turning Curves*** books will be available online. Prior to the program, registrants will receive a confirmation email with instructions to access handouts along with other program information.

Evaluations will be emailed after the program. Once the evaluation has been completed, your certificate will be available.



Please contact the host AHEC at least two weeks in advance of the program for assistance under the Americans with Disabilities Act.